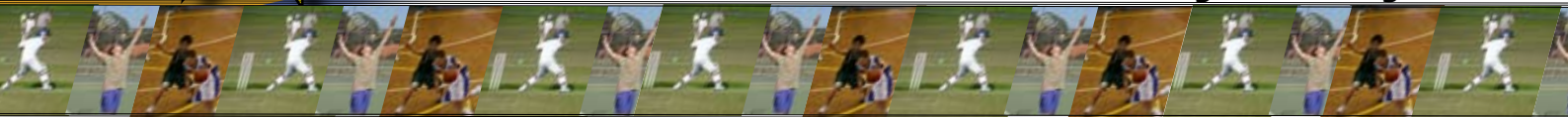




# Waverley College Holiday Camps

## Enrolment Form

Years 5 ~ 7 (ages 10 - 12) **2009 July Holidays**



Please indicate the dates your son will be attending, complete the required details and return to Enrolments - Holiday Camps, Waverley College, 131 Birrell St, Waverley, 2024 or fax to 9389 1274 - Attention: Kira.

(Your placement will be confirmed by email week commencing 22nd June)

- Monday 6th July to Friday 10th July
- Monday 13th July to Friday 17th July
- Monday 20th July to Friday 24th July
- Monday 27th July & Tuesday 28th July \*\*

Don't want a full week? Please write individual days required here:

### Fees

- \* \$250 per individual participant per week for 8.00am to 3.30pm Monday to Friday
- \* Additional \$50 per week (\$10 per day) for the late pick up option to 5.30pm
- \* Casual rate at \$65 (including late pickup option)
- \*\* Monday 27th July & Tuesday 28th July, will be charged at \$50 per day (\$60 per day with late pick up option)

### Personal Details

#### Child 1

Name \_\_\_\_\_

Age \_\_\_\_\_

Year at School \_\_\_\_\_

Allergies \_\_\_\_\_

Other medical conditions \_\_\_\_\_

Daily medication \_\_\_\_\_

Anything else we might need to know? \_\_\_\_\_

#### Child 2

Name \_\_\_\_\_

Age \_\_\_\_\_

Year at School \_\_\_\_\_

Allergies \_\_\_\_\_

Other medical conditions \_\_\_\_\_

Daily medication \_\_\_\_\_

Anything else we might need to know? \_\_\_\_\_

Has your son attended one of our Holiday Camps before? Yes/ No

What would he like to see or do at the camp?

Please tell us about any interests that your son might have so that we can develop our holidays camps, e.g. sporting, music, drama, filming and/or editing, computing?

### Parent/Guardian Contact Details

Name \_\_\_\_\_

Address \_\_\_\_\_

Email \_\_\_\_\_

Home Ph \_\_\_\_\_

Work Ph \_\_\_\_\_

Mobile \_\_\_\_\_

### Payment

#### Credit card (Mastercard, Visa, Amex)

Name on card

Card type  Amount

Credit card no

Expiry date

Signature

Daytime contact no

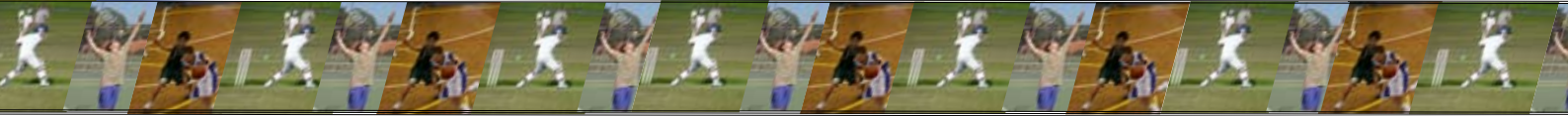
Need further information? Please ring  
Wayne Wheatley, Director, Swim School  
on 0418 447 420 or email  
swimschool@waverley.nsw.edu.au



# Waverley College

## Holiday Camps - Years 5 ~ 7 (ages 10 - 12)

### 2009 ~ 2010 Program



Waverley College is offering holiday camps during the term breaks

*(subject to numbers - confirmation of your place will be emailed in the week commencing 22nd June)*

#### 2009 July Holidays (enrol by 19th June)

Monday 6th July to Friday 10th July

Monday 13th July to Friday 17th July

Monday 20th July to Friday 24th July

Monday 27th July & Tuesday 28th July \*\*

#### 2009 December Holidays

Friday 4th December \*\*

Monday 7th December to Friday 11th December

Monday 14th December to Friday 18th December

Monday 21st December to Wednesday 23rd December

#### 2009 October Holidays

Tuesday 6th October to Friday 9th October

Monday 12th October to Friday 16th October

Monday 19th October \*\*

#### 2010 January Holidays

Monday 18th January to Friday 22nd January



#### Hours of operation and typical activity schedule:

Time	Activity	Comments
8.00am - 9.00 am	Drop off time	Performing Arts Centre, Birrell Street
8.30am - 10.30am	Morning activities	Cricket, Basketball, Tennis
10.30am - 11.00am	Morning tea	College Grounds
11.00am - 12.30pm	Morning activities	Indoor games in the Gym
12.30pm - 1.30pm	Lunch	College Grounds
1.30pm - 3.30pm	Afternoon activities	Indoor activities - computers/indoor sport games/movie in PAC
3.30pm - 5.30pm	Afternoon activities or swim squad	Late pick up option

#### Staffing:

\* Accredited staff will be provided for the camps

#### Fees

- \* \$250 per individual participant per week for 8.00am to 3.30pm Monday to Friday
- \* Additional \$50 per week (\$10 per day) for the late pick up option to 5.30pm
- \* Casual rate at \$65 (including late pickup option)
- \*\* Monday 27th July & Tuesday 28th July will be charged at \$50 per day (\$60 per day with late pick up option)

#### What to bring and where to go

- \* Morning tea and daily lunch. Drinks will be provided during the day and a sausage sizzle will be provided on the Friday of the weeklong camps.
- \* A hat, sensible clothing and sunscreen, swim wear (for October and summer camps), and sports shoes.
- \* Participants are welcome to bring their own tennis racket or cricket equipment.
- \* Daily drop off and pick-up will be at the Br Lacey Gymnasium



Please ensure the enrolment form with **full payment** is returned to Enrolments - Holiday Camps, Waverley College, 131 Birrell Street, Waverley, 2024 **by 19th June for the July Holiday camp**. Enrolments can be faxed to 9389 1274 (attention: Kira). Late enrolments will be accepted, but might lead to disappointment if the camps are full or poor enrolments result in the camp/s being cancelled.

Need further information? Please ring Wayne Wheatley, Director, Swim School on 0418 447 420 or email [swimschool@waverley.nsw.edu.au](mailto:swimschool@waverley.nsw.edu.au)